



# INSTALLING A PLASTERBOARD CEILING



WATCH THE VIDEO BY  
SCANNING THIS PAGE



## WHAT YOU WILL NEED

- USG Boral SHEETROCK® 10mm ceiling board
- USG Boral Stud Adhesive
- Plasterboard nails or screws
- USG Boral Cornice Adhesive (for back blocking)

## TOOLS

- Adhesive applicator
- Trimming knife
- T-Square
- Measuring tape and pencil
- Claw hammer or cordless drill
- Keyhole saw

Download these info-sheets or watch the videos at  
[USGBoral.com/au/diy](http://USGBoral.com/au/diy)

To watch as a video tutorial:

layar



1. DOWNLOAD THE  
FREE LAYAR APP



2. SCAN THIS PAGE



3. WATCH THE VIDEO!



## MEASURING AND CUTTING

1. Start by measuring and marking the ceiling board for length.
2. Holding the T-Square firmly along the mark, score through the board liner face with a trimming knife.
3. To complete the cut, lift the board and fold the offcut away from the scored face. Then run the trimming knife through the back liner paper at the fold.



### MEASURE TWICE, CUT ONCE!

4. To make openings for electrical wiring/fixtures, measure and mark their location on the plasterboard sheet. Cut the small holes with a keyhole saw. For neat round holes, use a hole-saw drill attachment.



### MORE INFORMATION

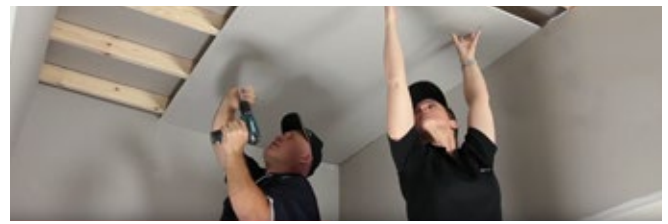
Download the USG Boral Plasterboard Installation Manual for comprehensive technical information and installation guidelines.

[USGBoral.com/au/installation](https://www.usgboral.com/au/installation)



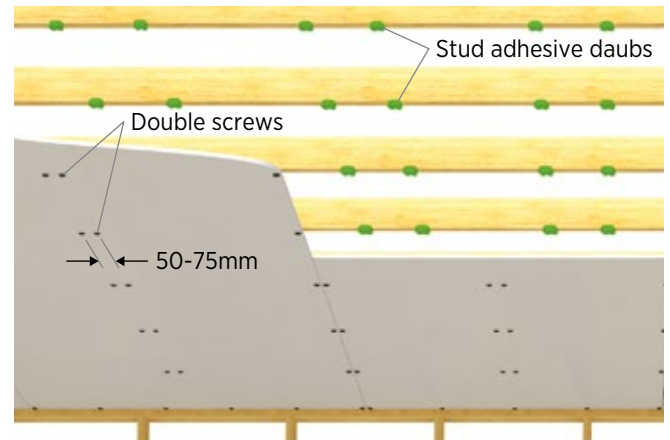
### SAFETY FIRST!

- Ensure any ladders, scaffolding, trestles or planks you use are adequate and safe
- Read cautionary notes on all product packaging
- Wear safety gloves when using sharp tools
- Wear a dusk mask and eye protection when sanding
- We recommend you consult with a licensed electrician and/or plumber about any electrical wiring and/or plumbing requirements, prior to installing plasterboard



## INSTALLING AND FIXING

1. First mark the location of your ceiling joists along the top edge of the wall board to help locate them once ceiling sheets are installed.
2. Use the adhesive applicator to apply stud adhesive in 'daubs' on the ceiling joists – 25mm wide and 15mm thick. Place adhesive daubs approximately 200mm apart, making sure they're 200mm away from the sheet edges and 200mm from centre of sheet screw points.
3. Ensuring that the recessed edge side of the sheet is facing OUT, install the ceiling board at right angles to the joists and screw along the edges first. Then using the printed lines as a guide, screw along the centre of the sheet. Finally, screw along the sheet ends 200mm apart.



### IMPORTANT!

Make sure you countersink the screws just below the plasterboard's surface so they can be filled later, taking care not to break the paper face. A counter-sinking drill bit attachment will help to prevent over-screwing.

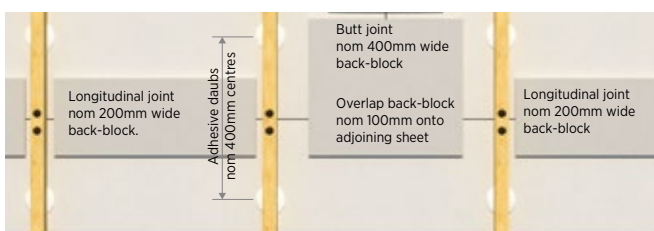
4. Repeat the process for the next sheet, ensuring they are butted neatly together. To reduce the possibility of joint cracking, use a technique called back blocking (see back page).
5. Allow the adhesive to dry for at least 24 hours – or 48 hours in cool conditions.



## BACK BLOCKING

Back-blocks are plasterboard panels attached to the back of joints to minimise cracking due to extreme climatic changes or timber shrinkage.

1. Cut plasterboard strips to fix across the back of the joints in the ceiling boards. Apply USG Boral Cornice Adhesive to the panels and fit the back-block over the centre of the joint.
2. Temporarily fasten the back block into place with 40mm plasterboard laminating screws. Do not drive them in too far, as you'll be removing them later before you finish the joint.
3. Then fit the second ceiling board onto the frame, following the same procedure as before and screw it into the back block.
4. Leave to dry for 24-48 hours and then remove the screws.



## NEXT STEP:

Jointing and finishing your ceiling – to create a smooth surface before painting. Download our infosheet and watch the video at [USGBoral.com/au/diy](https://www.usgboral.com/au/diy)

## NEED HELP?

Call **TecASSIST®** on **1800 811 222**  
or visit your USG Boral stockist.



UB1062-HAR 06/17

© 2017 USG BORAL. All rights reserved. The trademarks USG BORAL, INNOVATION INSPIRED BY YOU and TecASSIST are trademarks or registered trademarks of USG Boral Building Products or one or more of its affiliates. SHEETROCK is a trademark owned by United States Gypsum Company and used under license. The technical information in this document was correct at the time of printing. To ensure the information you are using is current, visit [USGBoral.com/au/diy](https://www.usgboral.com/au/diy)  
USG Boral Building Products Pty Limited - ABN 84 004 231 976  
- 251 Salmon Street, Port Melbourne, VIC 3207