

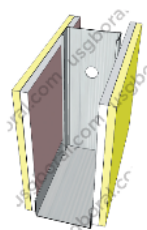
## Fire Rating 2 Hours - Fiberock (SSF-27)

### Description

Frame : JayaBMS Wall Track, JayaBMS Deflection Head Track, JayaBMS C Stud

Lining : 1 layer of USG Boral Firestop 16mm (inner) + 1 layer of USG Fiberock Aqua-Tough 12.7mm (outer)  
(both sides)

Weight : ± 54 kg/m<sup>2</sup>



STUD SIZE (mm)		MAXIMUM HEIGHT (mm) Non-Load Bearing Studs			WALL THICKNESS (mm)	FIRE RATING (minutes)	ACOUSTIC RATING (STC)	
Width	Thickness	@600mm centres	@400mm centres	Grade BS 5234			Without Insulation	Insulation Mineral Wool 50mm
64	0.5	4500	4700	Severe Duty	121.4	120	49	57
	0.7	4650	4950			120		
76	0.5	5150	5450		133.4	120	49	57
	0.7	5400	5750			120		
92	0.5	6100	6300		149.4	120	50	57
	0.7	6250	6550			120		
100	0.5	6350	6600		157.4	120	51	57
	0.7	6550	6900			120		
150	0.7	8250	8900	207.4	120	53	57	